

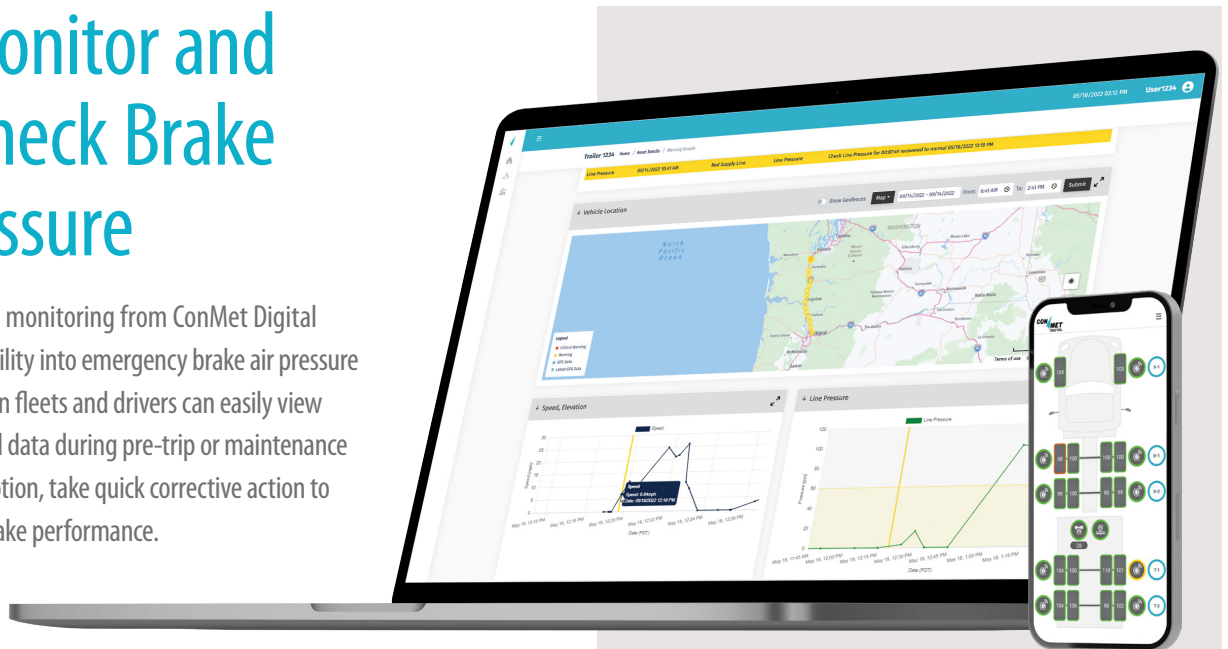


SmartAir™

LINE PRESSURE

Easily Monitor and Quick-Check Brake Line Pressure

SmartAir™ line pressure monitoring from ConMet Digital provides real-time visibility into emergency brake air pressure status. With this solution fleets and drivers can easily view alerts and analyze trend data during pre-trip or maintenance checks and, while in motion, take quick corrective action to optimize emergency brake performance.



TAKE ACTION WITH THE DATA TO*:

Modernize Maintenance



- ▶ Ensure consistent emergency brake line pressure pre-trip and while in motion
- ▶ Extend brake and tire life by avoiding extra wear and tear from brake drag
- ▶ Enhance pre-trip brake inspection*

Increase Uptime

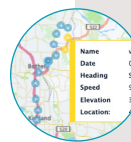


- ▶ Decrease roadside repairs and early-life brake replacements
- ▶ Reduce pre-trip inspection time*
- ▶ Prevent low pressure air line inspection violations

Improve Safety

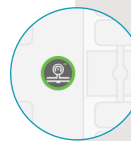


- ▶ Reduce brake pressure-related malfunctions that can cause brake drag
- ▶ Avoid brake pressure loss across single, double, or triple trailer configurations
- ▶ Ensure consistent air line pressure for better brake performance and traction



Quickly identify and take action on insufficient brake pressure

Emergency brake air line pressure updated every 90 seconds

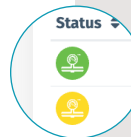


Warnings for air line disconnection and low pressure (<60 PSI) pre-trip and while in motion



Customized views for fast, effective brake service

View data on the ConMet Digital driver app, dashboard, or send warnings via SMS text message or email



Warnings easily visible so proper corrective action can be taken when and where necessary

*SmartAir line pressure should be used as a supplement to a comprehensive regular maintenance program that includes regular, manual, and visual inspections of assets.

TECHNICAL SPECIFICATIONS

	SmartAir™ Sensor with Line Pressure Valve	SmartTrack™ Communications Gateway
Dimensions (L x W x H)	Threaded 1/2" diameter assembly: 1.8 x 0.8 x 3.4" (46 x 21 x 86 mm)	3.7 x 2.0 x 0.8" (94 x 53 x 20 mm)
Data sampling rates	Emergency brake air line pressure sampled every 90 seconds	GPS sampled every 2 minutes when gateway is powered; every 24 hours unpowered
Pressure range	20–1300 kPa (3–188 PSI)	n/a
Pressure accuracy	± 1%	n/a
Battery life	5 years	Connected to primary power, back-up battery lasts nine days
IP rating	IP 67 and IP 6k9k	IP 67
Operating temperature	-40° to +203° F (-40° to +95° C)	-22° to +140° F (-30° to +60° C)



Available in 1/2" or 3/8" line diameters with threaded or push-to-connect fittings

Powerful Bluetooth® Connectivity

- ▶ Robust, flexible ecosystem used in high-end connected products like smartphones and laptops
- ▶ Bluetooth development community continuously updates their software to enhance security
- ▶ Small antenna allows for a smaller sensor
- ▶ Low energy use extends battery life

ConMet Digital: Advancing Connected Technologies for Heavy-Duty Vehicles



Streamlining Connectivity

A flexible Vehicle Area Network (VAN) integrates sensors and data analytics to seamlessly connect fleets with real-time alerts and data insights.



Expanding Telematics Solutions

The growing ConMet Digital portfolio, among others, includes SmartAir™ TPMS, SmartTrack™ asset management, SmartHub™ wheel end monitoring, SmartAir™ line pressure monitoring, and SmartAir™ axle load monitoring.



Transforming Raw Data into Real Insights

Decades of industry knowledge, engineering expertise, performance data, proprietary algorithms, and cutting-edge machine learning techniques make ConMet Digital's products smarter with every mile.

Featured Product



- ▶ Included within the ConMet gateway
- ▶ Real-time GPS asset tracking
- ▶ Accurate distance tracking
- ▶ Customized geofencing that offers precise departure and arrival alerts
- ▶ Improved asset utilization, fuel economy, and safety