



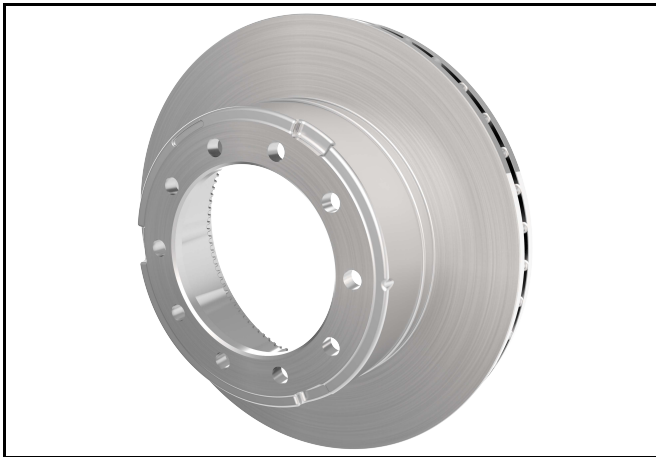
Service Kit Part Number 10030921  
ConMet Hat-Shaped Rotor 10003830  
Rotor Minimum Thickness 1.32" (33.5 mm)

## DISC BRAKE ROTOR REPLACEMENT

### NOTE

Install the brake rotor using only the hardware provided in the kit.

1. Clean the rotor mounting surfaces and position the rotor onto the hub.
2. Using the new fasteners included in the kit, thread in all 10 cap screws with a washer on each. Torque in a star pattern to 140 ft-lbs.



ConMet 10003830 Hat-Shaped Rotor

