

WHEEL SEAL

Leakage Identification

NOTE: Always follow your company's safety procedures.

Hubs Equipped with **Drum Brakes:**

✓ Non-Leaking Seal

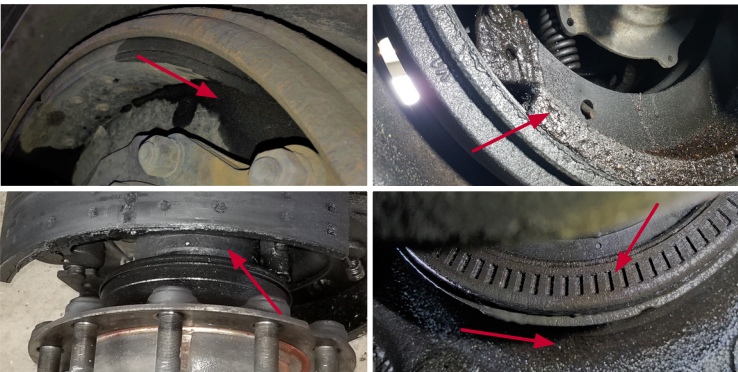
Seal shows no signs of reoccurring moisture or seepage onto the seal face, ABS ring, hub, or brakes.



✗ Leaking Seal

Seal is actively leaking, wetting the tire, wheel, hub, ABS ring, or brakes with oil.

NOTE: A seal in any of these conditions meets out-of-service criteria and should be replaced.



WHEEL SEAL

Leakage Identification

NOTE: Always follow your company's safety procedures.

Hubs Equipped with **Air Disc Brakes:**

✓ Non-Leaking Seal

No signs of oil leaking or running down the tire, wheel, rotor, brake pads, or caliper.



✗ Leaking Seal

Seal is actively leaking, wetting the tire, wheel, hub, rotor, ABS ring, brake pads, or caliper with oil.

NOTE: A seal in any of these conditions meets out-of-service criteria and should be replaced.

