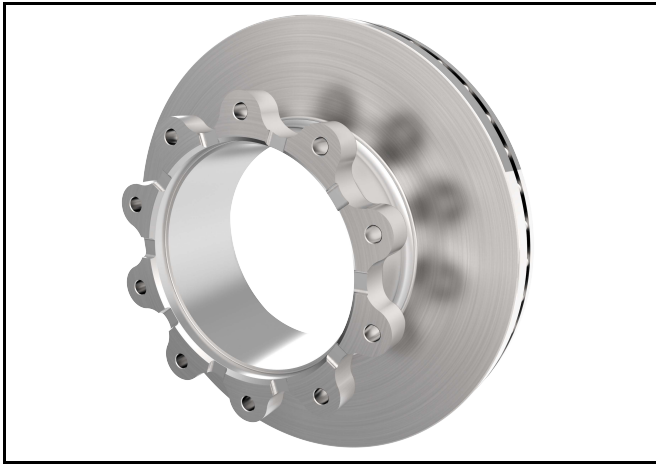




Service Kit Part Number 10082181
ConMet U-Shaped Rotor 10080753
Rotor Minimum Thickness 1.46" (37.0 mm)



ConMet 10080753 U-Shaped Rotor

DISC BRAKE ROTOR REPLACEMENT

NOTE

Install the brake rotor using only the hardware provided in the kit.

1. Clean the rotor mounting surfaces and position the rotor onto the hub.
2. Using the new fasteners included in the kit, thread in all 10 cap screws with a washer on each. Torque in a star pattern to 220 ft-lbs.

