



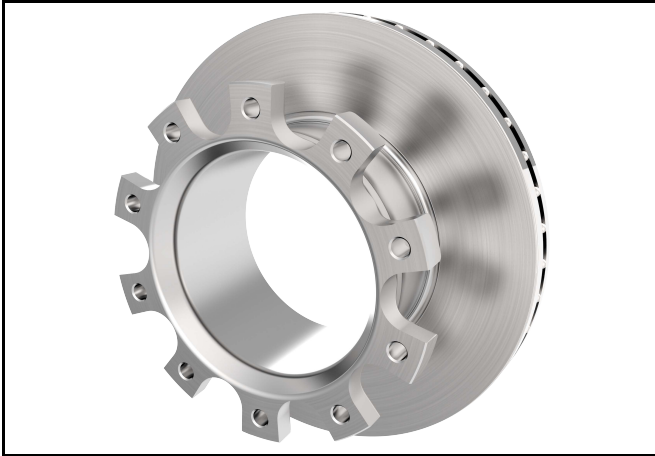
Service Kit Part Number 10020682
ConMet U-Shaped Rotor 10020109
Rotor Minimum Thickness 1.46" (37mm)

DISC BRAKE ROTOR REPLACEMENT

NOTE

Install the brake rotor using only the hardware provided in the kit.

1. Clean the rotor mounting surfaces and position the rotor onto the hub.
2. Using the new fasteners included in the kit, thread all 10 cap screws with a washer on each into the rotor. Torque in a star pattern to 200 ft-lbs.



ConMet 10020109 U-Shaped Rotor

