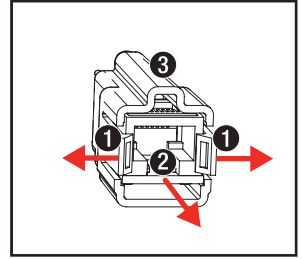


# TPSI-004 FITTING INSTRUCTIONS

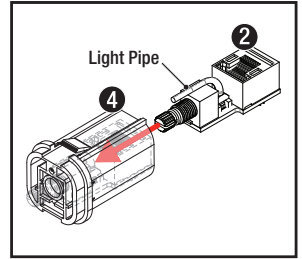
## Step 1

- With the original remote head, gently ease the rearmost clips (1) outwards, and slide the remote head assembly (2) from the existing housing (3).



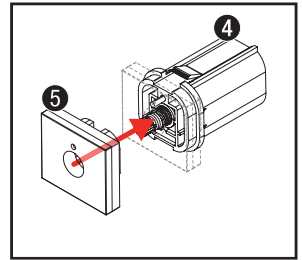
## Step 2

- Slide the remote head assembly (2) into the new TPSI-004 housing (4) supplied, ensuring the remote head light pipe is not dislodged.



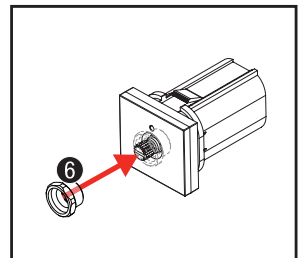
## Step 3

- Attach the TPSI-004 switch face (5) to the housing (4).



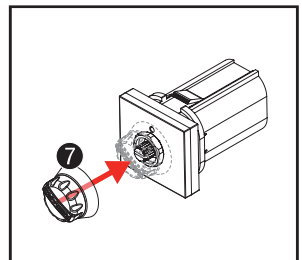
## Step 4

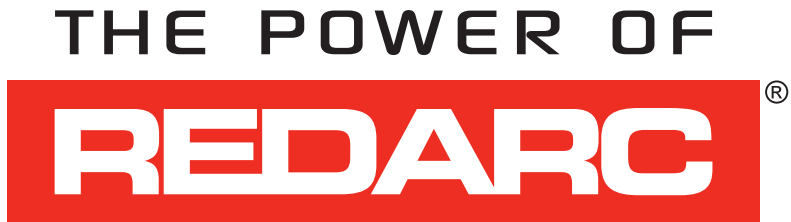
- Fasten the switch face using the nut (6) torqued to 0.8Nm on the remote head shaft. After tightening the nut, turn the remote head shaft anti-clockwise until it stops.



## Step 5

- Apply the knob (7) with "0" aligned to the light pipe. The remote head is now assembled.





## FREE TECHNICAL ASSISTANCE

For product and technical support contact your regional distributor, call our head office on Monday to Friday between 8:00am to 5:30pm Australian Central Standard Time, or send an email using the region specific details outlined below.

### Australia

[power@redarc.com.au](mailto:power@redarc.com.au)

[www.redarc.com.au](http://www.redarc.com.au)

 +61 8 8322 4848

### New Zealand

[power@redarcelectronics.co.nz](mailto:power@redarcelectronics.co.nz)

[www.redarcelectronics.co.nz](http://www.redarcelectronics.co.nz)

 +64 9 8322 4848

[www.redarc.com.au](http://www.redarc.com.au)