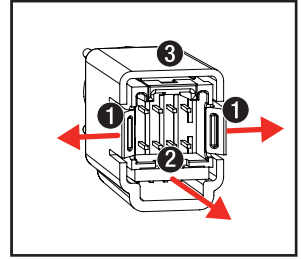


TPSI-009 FITTING INSTRUCTIONS

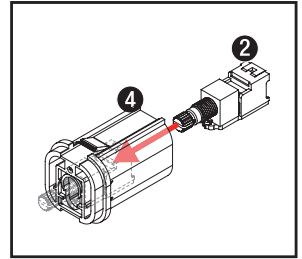
Step 1

- With the original remote head, gently ease the rearmost clips (1) outwards, and slide the remote head assembly (2) from the existing housing (3).



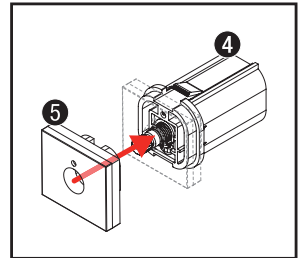
Step 2

- Slide the remote head assembly (2) into the new TPSI-009 housing (4) supplied.



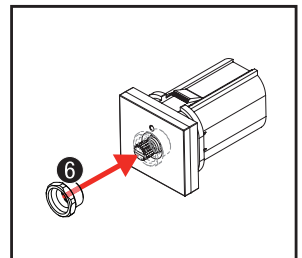
Step 3

- Attach the TPSI-009 switch face (5) to the housing (4).



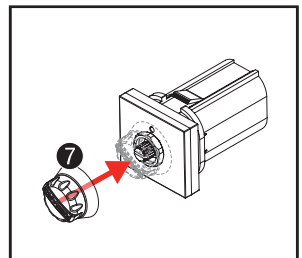
Step 4

- Fasten the switch face using the nut (6) torqued to 0.8Nm on the remote head shaft. After tightening the nut, turn the remote head shaft anti-clockwise until it stops.



Step 5

- Apply the knob (7) with "0" aligned to the light pipe. The remote head is now assembled.



THE POWER OF

REDARC[®]

FREE TECHNICAL ASSISTANCE

For product and technical support contact your regional distributor, call our head office on Monday to Friday between 8:00am to 5:30pm Australian Central Standard Time, or send an email using the region specific details outlined below.

Australia

power@redarc.com.au

www.redarc.com.au

 +61 8 8322 4848

New Zealand

power@redarcelectronics.co.nz

www.redarcelectronics.co.nz

 +64 9 8322 4848

www.redarc.com.au