

THE POWER OF  
**REDARC**®

# REDARC SOLAR RANGE TRAINING

© COPYRIGHT REDARC CORPORATION 2021 - COMMERCIAL IN CONFIDENCE



**MONO-  
CRYSTALLINE  
SOLAR  
PANELS**





# MONOCRYSTALLINE FIXED SOLAR PANELS

- Anodized aluminium frame with tempered glass coating
- High cell efficiency
- Low net weight
- Small footprint
- Solar Industry Standard MC4 connectors for easy installation
- Operating Temperature: - 40°F to + 185°F
- Compatible with REDARC ABS Mounts



50W



80W



120W



180W



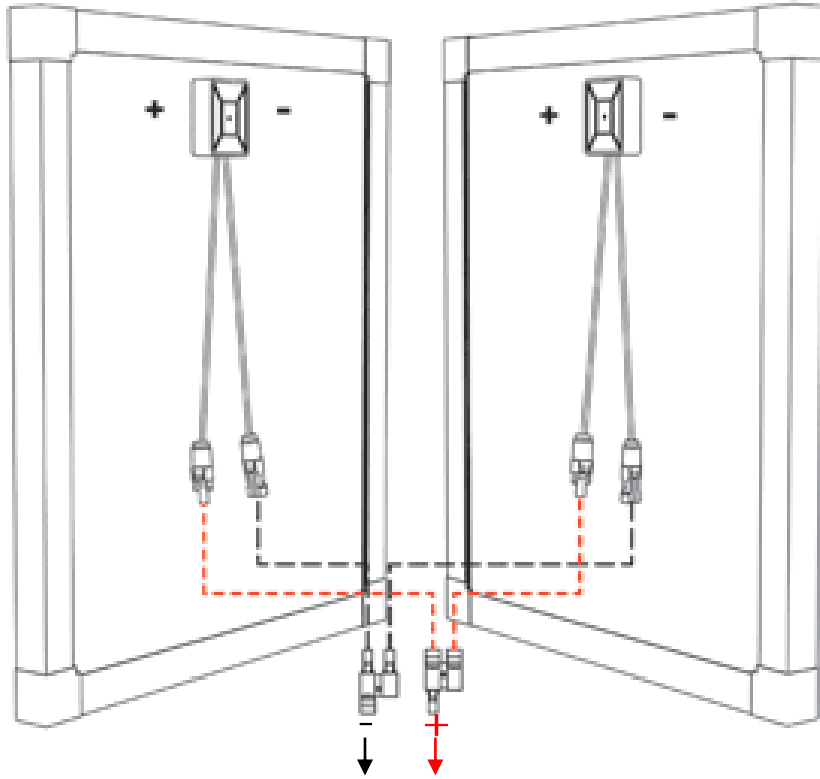
200W



# SOLAR PANELS PARALLEL vs. SERIES CONNECTIONS

Correct Method for  
all REDARC Products

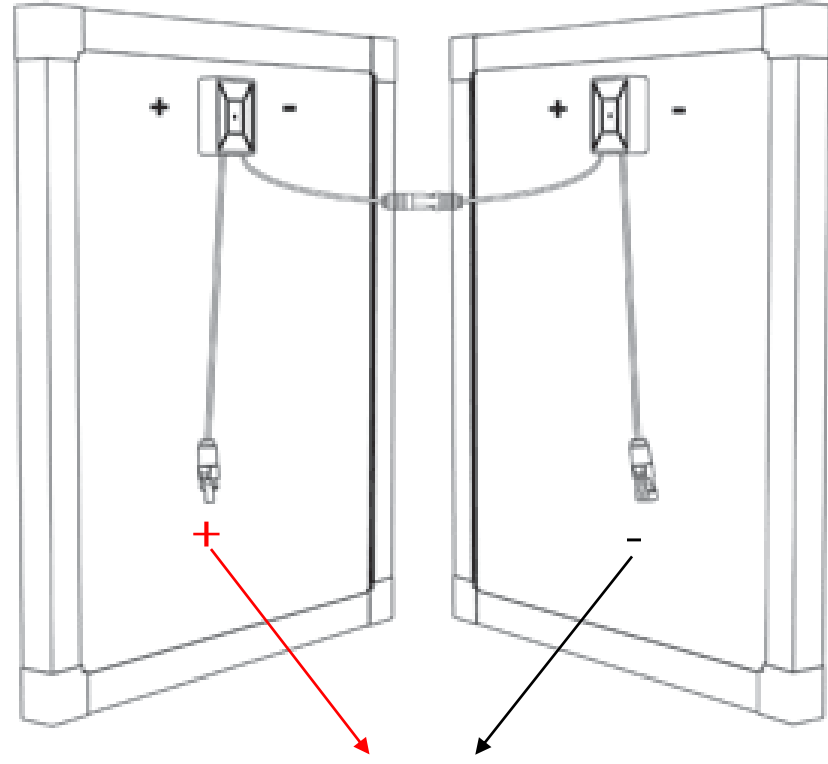
**PARALLEL CONNECTION**  
POSITIVE TO POSITIVE / NEGATIVE TO NEGATIVE



2 X 120WATT PANELS  
CONNECTED IN PARALLEL

=  
12VOLTS PANEL - 240WATT @ ~12AMPS

**SERIES CONNECTION**  
POSITIVE TO NEGATIVE TO POSITIVE TO NEGATIVE



2 X 120WATT PANELS  
CONNECTED IN SERIES

=  
24VOLT PANEL - 120WATTS @ ~6AMPS



# MONOCRYSTALLINE FOLDING SOLAR PANELS

- Ultra-lightweight, unglazed design creates a less fragile product with easier portability
- Ethylene tetrafluoroethylene (ETFE) Resin Like coating protects solar cell from damage, as opposed to a traditional glass design
- Genuine 50A Anderson connection
- Comes with a Protective Carry/Cover
- Operating Temperature: - 40°F to + 185°F
- Magnets Featured in Handle - Ease of Opening & Closing
- Available as Folding Solar Panel (only), or as a Kit including Regulator and Cables supplied



# 120W MONOCRYSTALLINE FOLDING SOLAR PANEL

- Cell efficiency: 20.6%
- Net weight: 13.9LBS
  
- Open Dimensions: 40.55 x 28.15 x 0.98Inches
- Closed Dimensions: 20.27 x 28.15 x 1.97Inches
  
- Max. Power Voltage: 20.0V
- Max. Power Current: 6.0A
- Open Circuit Voltage: 24.0V
- Short Circuit Current: 6.48A



SPFP1120





# 120W MONOCRYSTALLINE FOLDING SOLAR PANEL KIT

Includes:

- SRPA0120 - 10amp Solar Regulator
- SRC0009 - 5ft Anderson To Battery Clip Cable
- SRC0018 - 16ft Anderson To Anderson Cable



SPFP1120-K

## 200W MONOCRYSTALLINE FOLDING SOLAR PANEL

- Cell efficiency: 23.0%
- Net weight: 20.94lbs
  
- Open Dimensions: 53.94 x 31.5 x 0.98Inches
- Closed Dimensions: 26.97 x 31.5 x 1.97Inches
  
- Max. Power Voltage: 20.0V
- Max. Power Current: 10.0A
- Open Circuit Voltage: 24.0V
- Short Circuit Current: 10.8A



SPFP1200



# 200W MONOCRYSTALLINE FOLDING SOLAR PANEL KIT

Includes:

- SRPA0240 - 20A Solar Regulator
- SRC0009 - 5ft Anderson to Battery Clip Cable
- SRC0018 - 16ft Anderson to Anderson Cable



SPFP1200-K



**REGULATORS,  
CABLES &  
ACCESSORIES**

# SOLAR CABLES AND ACCESSORIES



SRC0001  
16FT MC4  
REG TO PANEL  
CABLE



SRC0001-CK  
MC4 SOLAR  
CONNECTOR KIT



SRC0002  
32FT MC4  
REG TO PANEL CABLE



SRC0003  
5FT MC4 REG  
TO PANEL  
CABLE



SRC0006  
MC4 PARALLEL  
Y-ADAPTOR KIT



SRC0008  
5FT ANDERSON TO  
ANDERSON CABLE



SRC0009  
5FT ANDERSON TO BATTERY  
CLIP CABLE



SRC0010  
5FT ANDERSON TO BATTERY  
EYELET TERMINAL CABLE



SRC0011  
ANDERSON  
SERIES CABLE



SRC0012  
ANDERSON  
PARALLEL CABLE



SRC0016  
5FT ANDERSON TO  
BARE WIRE CABLE



SRC0017  
5FT MC4 TO ANDERSON  
CONNECTOR CABLE



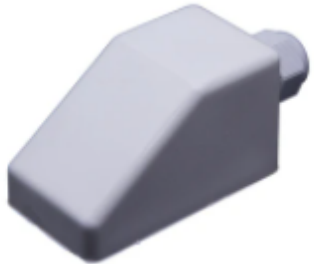
SRC0018  
16FT ANDERSON TO  
ANDERSON CABLE



SRC0019  
32FT ANDERSON TO  
ANDERSON CABLE



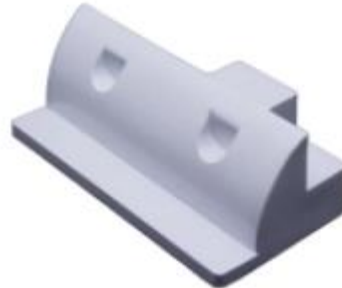
# PANEL MOUNTS AND ACCESSORIES



**SMC0001**  
ABS SINGLE  
CABLE GLAND



**SMI9001**  
ABS PLASTIC CORNER  
SOLAR PANEL MOUNT (X4)



**SMI9002**  
ABS PLASTIC SOLAR  
PANEL SIDE MOUNT (X2)



**SMI9003**  
ABS 20.7" PLASTIC SOLAR  
PANELSPOILER MOUNT (X2)



**SMI9007**  
ABS 26.4" PLASTIC SOLAR  
PANEL SPOILER MOUNT (2)

# REGULATORS, MONITORS & VALUE PACK



SRPA0120  
12V 10AMP PWM  
SOLAR REGULATOR



SRPA0240  
12V 20AMP PWM  
SOLAR REGULATOR



SRPA0360  
12V 30AMP PWM  
SOLAR REGULATOR



SRPA-RM  
SOLAR REMOTE  
MONITOR



SRPA20-VP  
12V 20AMP SOLAR REGULATOR  
AND CABLE VALUE PACK